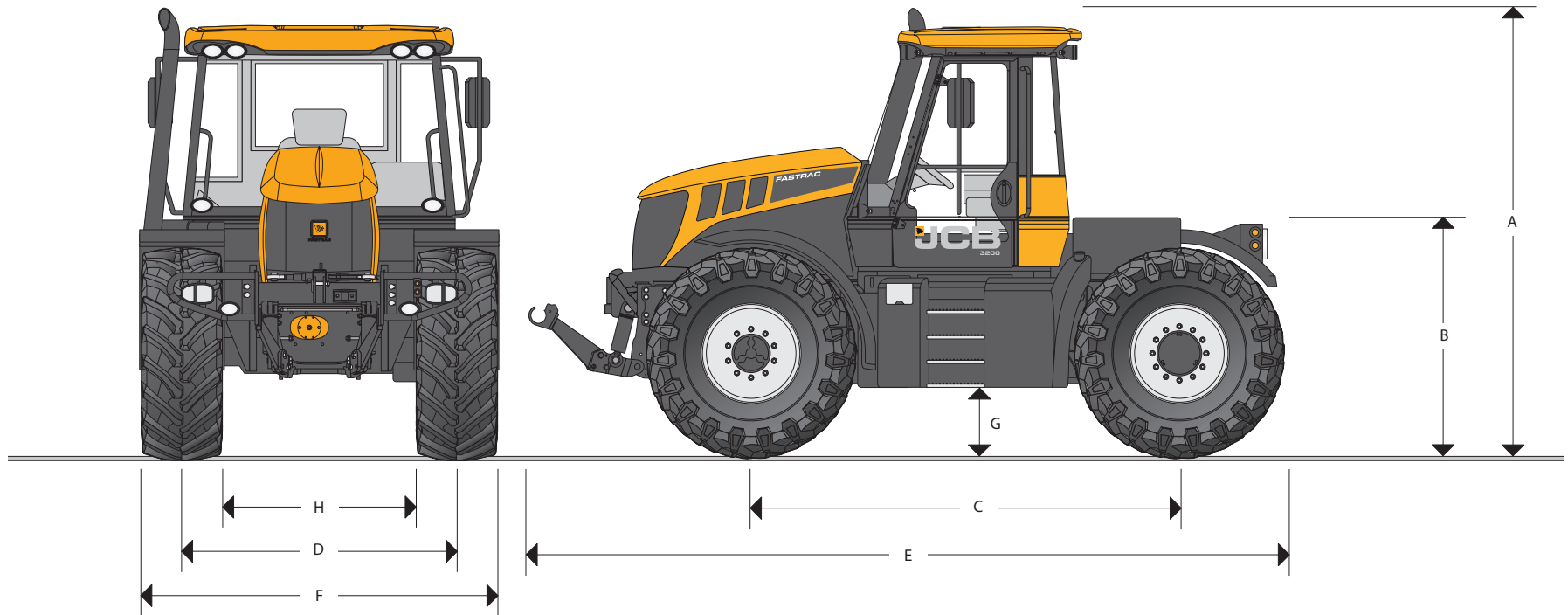




FULLY SUSPENDED WITH 4 WHEEL ABS DISC BRAKING JCB P-TRONIC TRANSMISSION



STATIC DIMENSIONS

Tires	540/65R34
	ft-in (m)
A Height to Exhaust	10-7 (3.23)
B Height to Deck	5-3 (1.60)
C Wheelbase	10-0 (3.06)
D Track Width	6-8 (2.01)

Tires	540/65R34
	ft-in (m)
E Overall Length	17-1 (5.20)
F Overall Width	8-4 (2.53)
G Ground Clearance	1-4 (0.41)
H Width Between Tires	4-11 (1.49)



WHEELS AND TIRES

4 equal sized, welded wheels. Rear centers differ to accommodate large reduction hubs. Front directional and rear fixed fenders. Fixed pannier mounted fenders.

	Factory Fit		
	Rate	Track in (mm)	40 mph (65 km/h)
540/65R34	D	76/80 (1930/2015)	●
600/65R28	D/E	76 (1930)	●
(Front) 540/65R30 (Rear) 600/65R28	D/G	80F 76R	●

OPTIONAL EQUIPMENT

- Front hydraulic linkage (Category 2) complete with front mounted controls.
- Front PTO, single output.
- Front weights.
- Rear deck weight.
- Heavy duty suspension cylinders.
- Front hydraulic service ('T' spool 3).
- Front hydraulic services ('T' spool 3 & 4).
- Front free flow return.
- 6 spline (1.75") PTO stub.
- Radar speed/wheel slip control package.
- Deluxe worklight package.
- Heated windshield, with heated and electrically adjustable mirrors.
- Hydraulic load sensing power beyond connection.

CAB

High specification, 2 door, full width, low noise.

Standard Equipment Includes:

- Full cab air conditioning.
- Air suspension seat.
- Dust filter and heater.
- Tinted glass.
- Front and rear wiper/washer.
- Truck type rear view mirrors.
- Full lighting set including direction indicators, hazard lights, six front and four rear work lights.
- 12v power socket.
- Passenger seat.
- Seat belts.
- Cigar lighter and ashtray.
- Side console illumination.
- Digital clock.
- Beacon.
- Storage compartment.
- Radio preparation.
- Sun blind.
- Cable access through rear window.
- Rear fender mounted PTO cut-out switch.
- Deluxe driver's seat.



ENGINE

		3230
Make		Sisu Power
Model		74AWI
Rated Engine Speed	rpm	2100
Gross Power @ Rated Speed	hp (kW)	220 (164)
Max Gross Power	hp (kW)	230 (172)
Transport Boost - Gross Power*	hp (kW)	260 (194)
PTO Power	hp (kW)	190 (141)
Max Torque @ 1500 rpm	Nm/ft (lb/ft)	949 (700)
Injection		Common Rail
No of Cylinders		6
Capacity	liter	7.4
Cooling		Water
Air Cleaner		Dual Dry Element
Aspiration		Turbocharged and Aircharge Cooled
*Only available in gears D5 & D6		

SUSPENSION

Front: Coil spring and damper, microcellular secondary spring.
Rear: Hydro-pneumatic self leveling.

ELECTRIC EQUIPMENT

System Voltage	V	12
Alternator Output	A	200
Battery Capacity	A	2 x 105
Electrical Wiring – to IP67 standard.		

CAPACITIES

	gal (l)
Fuel Tank	105 (400)
Hydraulic Tank	27 (105)
Urea Tank (DEF)	15 (57)

HYDRAULICS

3 Point Linkage: Electronic draft/position intermix, rate of drop, adjustable lift height, plus external lift and lower.
Rear Hitch: 15,431 lb (7,000 kg); Category 3; Quick attach hook ends, eye end top link.
Front Hitch (optional): Lift capacity at link ends – 7,716 lb (3,500 kg); Category 2; Folding, quick attach type.



AUXILIARY HYDRAULICS

Oil Flow:	2100rpm 33 gal/min
Max Oil Flow:	37 gal/min
Operating Pressure:	3,045 psi (210 bar)
Spool Valves:	4 electronic, 7 position double acting spool valves with time & flow control and constant pump

STEERING

Type:	Re-circulating ball, power assist.
Column:	Tilt and telescope adjustable.
Turning Radius:	24 ft 6 in on 540/65R34 @ 80" (2,015mm) track.

POWER TAKE OFF

Type:	Fully independent to front and rear (front optional).
Actuation:	Electro-hydraulic.
Speeds:	540 rpm @ 1,930 engine rpm 1,000 rpm @ 1,890 engine rpm
PTO Power:	190 hp, 141.7 kW
Speed Change:	By in-cab lever, 540: neutral: 1,000 rpm Front and rear always rotate at same speed.
Output Spline:	6 or 21 1 $\frac{1}{8}$ " diameter, 20 spline 1.75" diameter

BRAKES

Type:	ABS with twin caliper outboard discs on all four wheels and heavy duty suspension system.
Operation:	Air over hydraulic to EEC truck specification.
Park Brake Type:	Independent disc on transmission output shaft.
Actuation:	Sprung on, air pressure off.
Trailer Brakes:	1. Twin line air brakes. 2. Air trailer brake automatically applied by tractor park brake. 4. ABS 12 V trailer supply socket as standard.

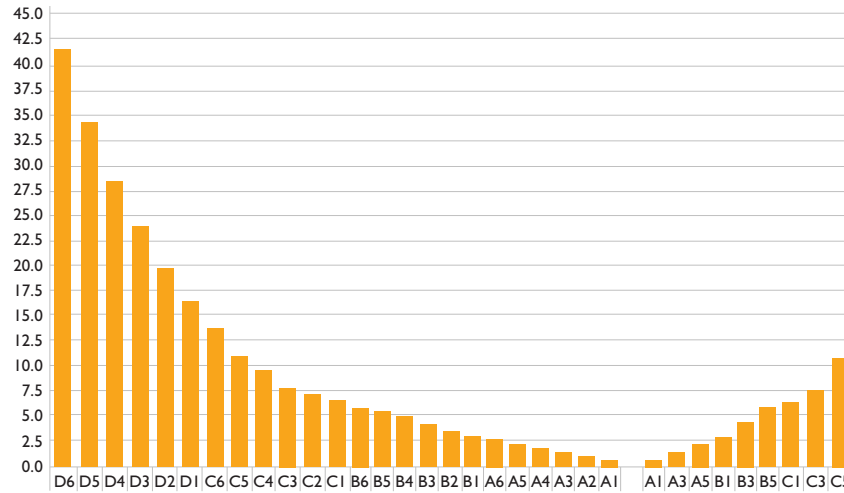
AXLES

Both Axles:	Beam type with outboard epicyclic reduction hubs. 10 stud wheel retention on front axle. 12 stud wheel retention on rear axle. Four wheel drive selectable by rotary switch – electro-hydraulic sprung on/pressure off (on the move). Both front and rear differentials electro-hydraulic soft engage clutch type. 2 ABS speed sensors and pole wheels.
--------------------	--



TRANSMISSION

Semi Powershift with 24 forward & 9 reverse gears. Clutchless range changes with 3 transmission modes.



VEHICLE WEIGHTS

Based on 3190 with full fuel and hydraulic tanks, no driver and no ballast.

	Front Axle	Rear Axle	Total
	lb (kg)	lb (kg)	lb (kg)
Base Machine	9475 (4307)	8675 (3943)	18,850 (8250)
Plus Front Linkage & PTO	10,450 (4750)	8492 (3860)	18,942 (8610)

REAR LOAD PLATFORM

Maximum dimensions: 4 ft 1 in x 7 ft 5 in (1.25 x 2.25 m)

Capacity: 5,511 lb (2,500 kg)
7,165 lb (3,250 kg) with heavy duty suspension cylinders.

Note: All deck mounted equipment currently fitted to other JCB Fastracs will fit this machine with minimum modification.



A GLOBAL COMMITMENT TO QUALITY

JCB's total commitment to its products and customers has helped it grow from a one-man business into one of the world's largest manufacturers of backhoe loaders, crawler excavators, wheeled excavators, telescopic handlers, wheeled loaders, dump trucks, rough terrain fork lifts, industrial fork lifts, mini/midi excavators, skid steer loaders and tractors.

By making constant and massive investments in the latest production technology, the JCB factories have become some of the most advanced in the world.

By leading the field in innovative research and design, extensive testing and stringent quality control, JCB machines have become renowned all over the world for performance, value and reliability.

And with an extensive dealer sales and service network in over 150 countries, we aim to deliver the best customer support in the industry.

Through setting the standards by which others are judged, JCB has become one of the world's most impressive success stories.



JCB Headquarters Savannah, 2000 Bamford Blvd, Savannah, GA 31322 Tel: (912) 447-2000 Fax: (912) 447-2299 www.jcb.com

JCB reserves the right to change design, materials and/or specifications without notice. Specifications are applicable to units sold in the United States and Canada. The JCB logo is a registered trademark of J C Bamford Excavators Ltd.