

HERE'S THE

**NEW**

CATERPILLAR

**DW15** (SERIES E)

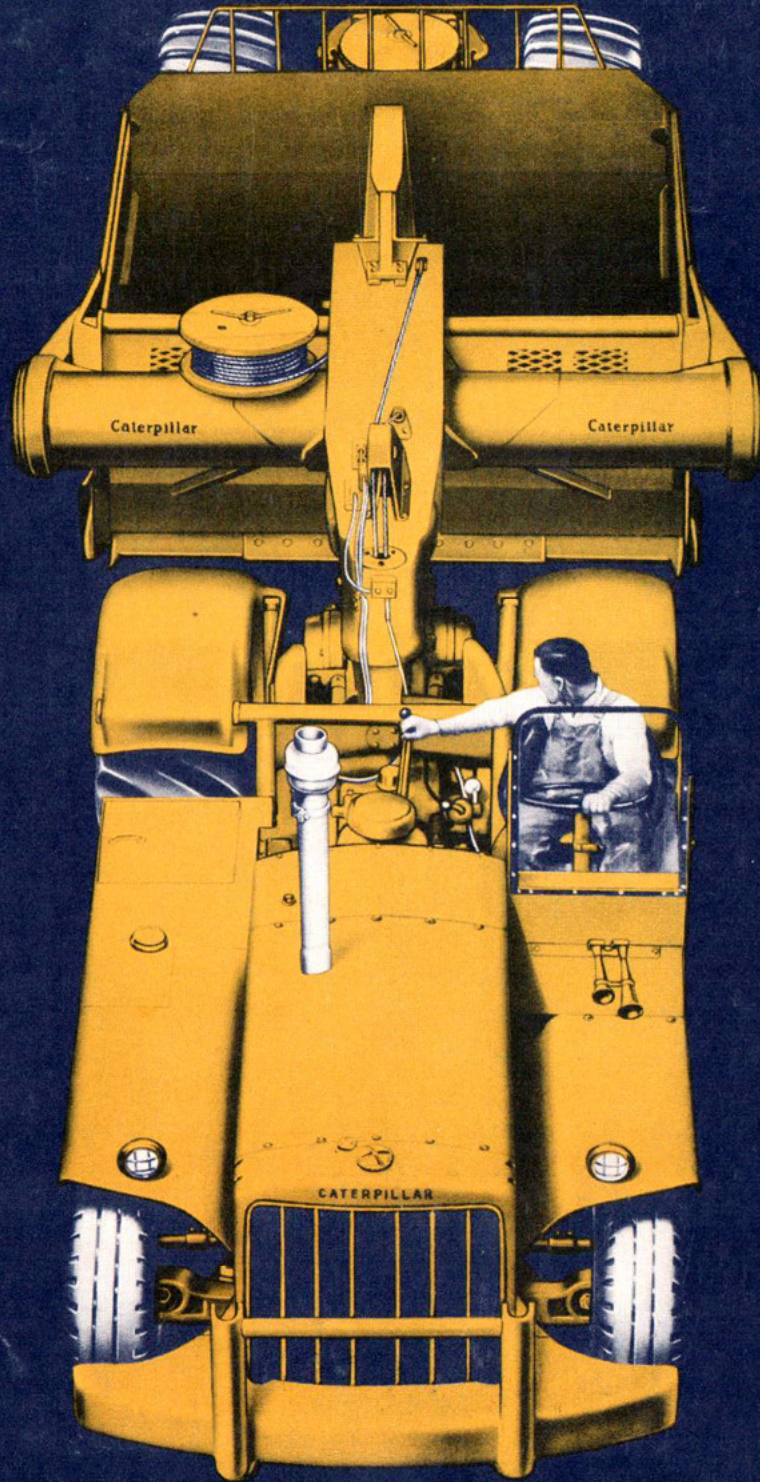
TRACTOR

AND

**NO. 428**

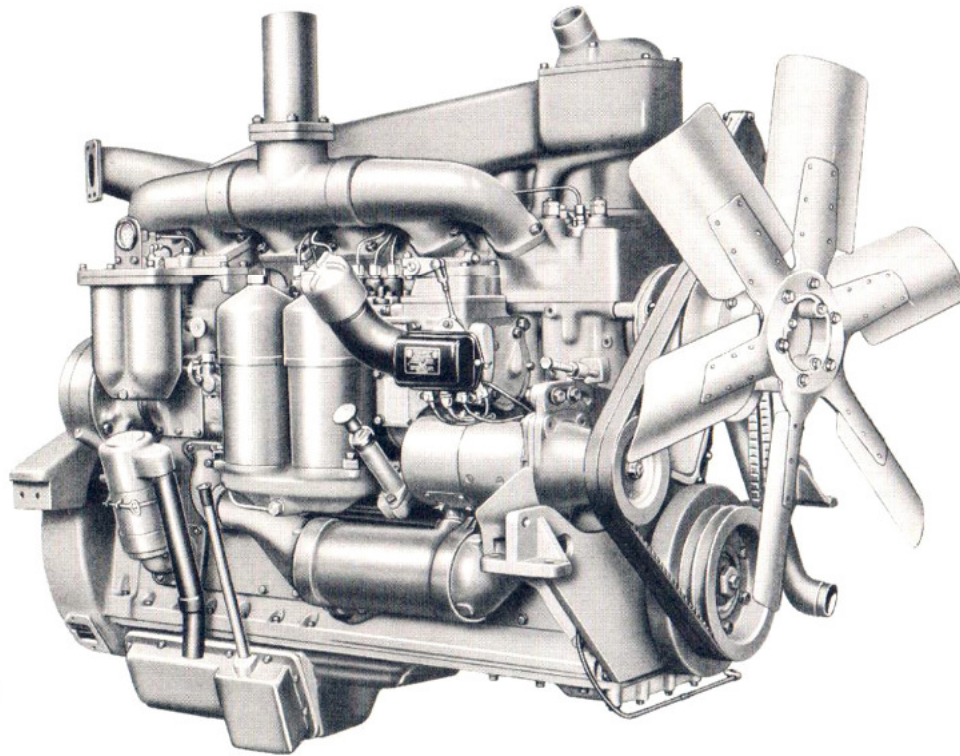
LOWBOWL

SCRAPER



# QUALITY BUILT—FOR THE TOUGH JOBS

## NEW HIGH TORQUE ENGINE

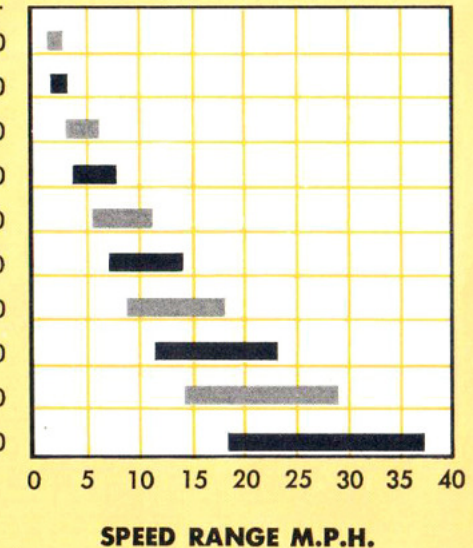


Design improvements have given the new DW15 Engine 200 horsepower (maximum output) at 2000 RPM. The high torque characteristics of this engine deliver high tractor rimpull through a wide range of travel speeds in each gear. The result is less gear shifting, faster acceleration, reduced cycle time and increased machine production with *no increase in operating costs.*

## TRAVEL SPEEDS AND POUNDS RIMPULL

At rated engine speed with 26.5-25 tires and loaded scraper

GEAR	RATED TORQUE		MAXIMUM TORQUE	
	MPH	POUNDS RIMPULL	MPH	POUNDS RIMPULL
1st	2.7	21,300	1.3	27,500
1st Aux.	3.4	16,700	1.7	21,550
2nd	6.2	9,120	3.1	11,800
2nd Aux.	8.0	7,140	4.0	9,220
3rd	11.4	5,070	5.7	6,430
3rd Aux.	14.3	3,960	7.2	5,120
4th	18.1	3,140	9.0	4,060
4th Aux.	23.1	2,455	11.5	3,170
5th	29.1	1,950	14.5	2,520
5th Aux.	37.2	1,525	18.6	1,970



Here's why the DW15 gives you

# BETTER TRACTION—LESS DOWN TIME

Wide section, tubeless 26.5-25 tires are standard equipment on the drive wheels of the Cat DW15 Tractor, and on the No. 428 LOWBOWL Scraper. These tubeless tires eliminate 80% of the down time due to tire failure.

A good selection of tire treads is available for different types of footings. Tires with closely spaced lugs give extra rubber in the tread and maximum resistance to wear, cuts and bruises. Where maximum traction characteristics are required, wider spaced lugs with good, self-cleaning action are available.

## ROCK TYPE TIRES



GOODYEAR

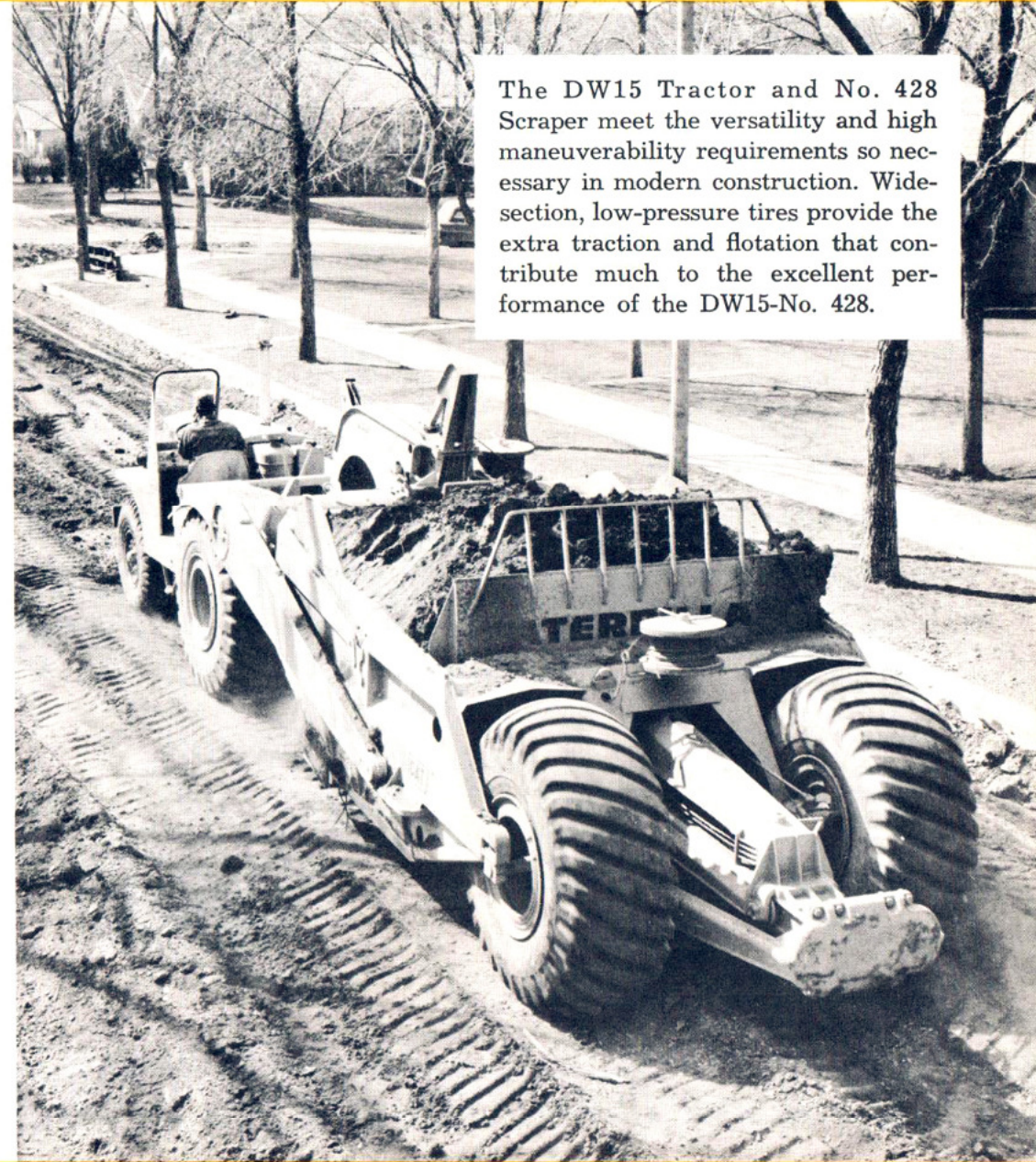
GENERAL

FIRESTONE

## TRACTION TYPE TIRES



The DW15 Tractor and No. 428 Scraper meet the versatility and high maneuverability requirements so necessary in modern construction. Wide-section, low-pressure tires provide the extra traction and flotation that contribute much to the excellent performance of the DW15-No. 428.



# CATERPILLAR-BUILT FOR YOUR JOB

# THE NO. 428 LOWBOWL STOR

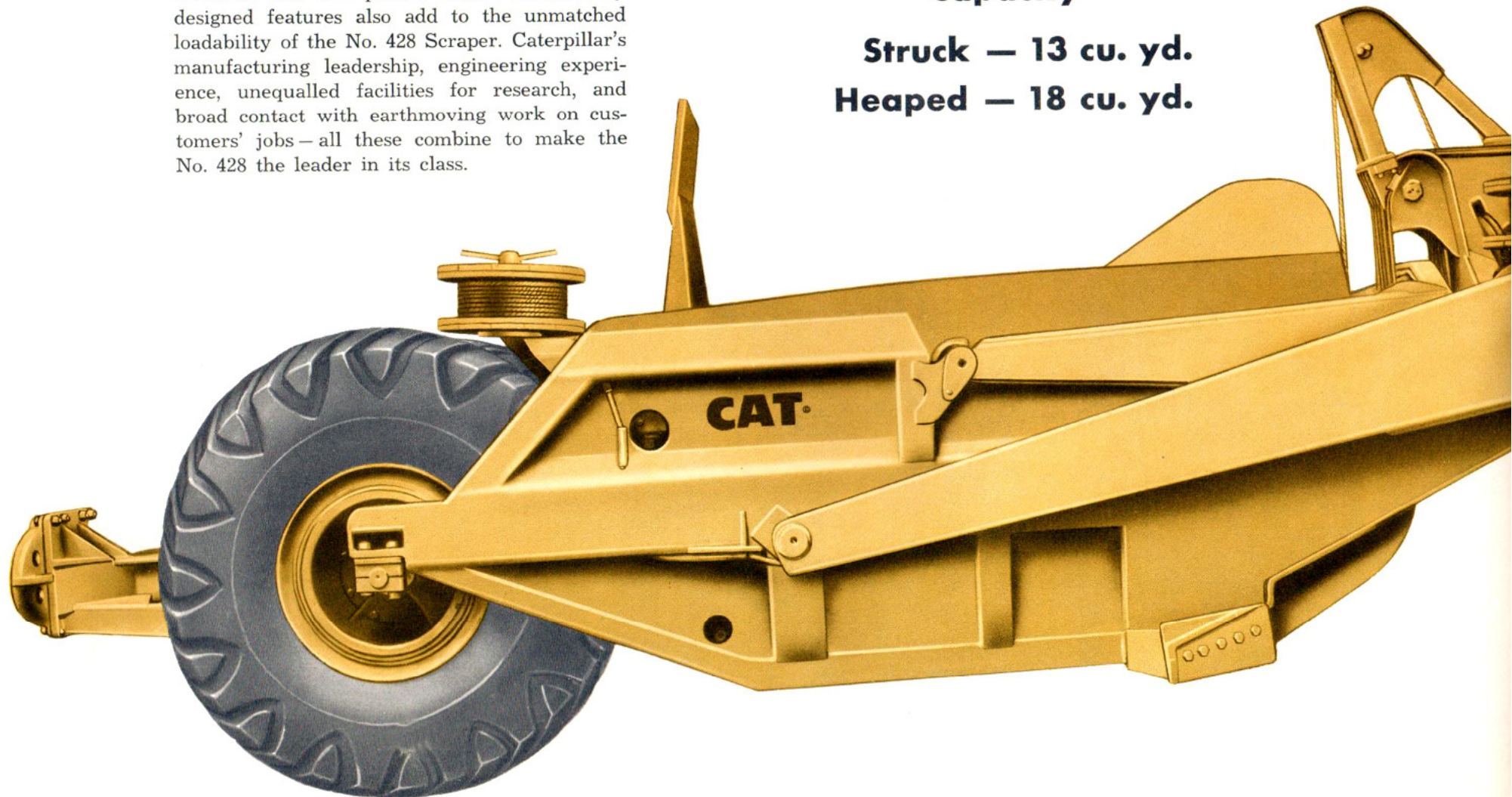
## FASTER LOADING—BIGGER LOADS

LOWBOWL design involves more than bowl dimensions and low profile. Other scientifically designed features also add to the unmatched loadability of the No. 428 Scraper. Caterpillar's manufacturing leadership, engineering experience, unequalled facilities for research, and broad contact with earthmoving work on customers' jobs—all these combine to make the No. 428 the leader in its class.

### Capacity

**Struck — 13 cu. yd.**

**Heaped — 18 cu. yd.**

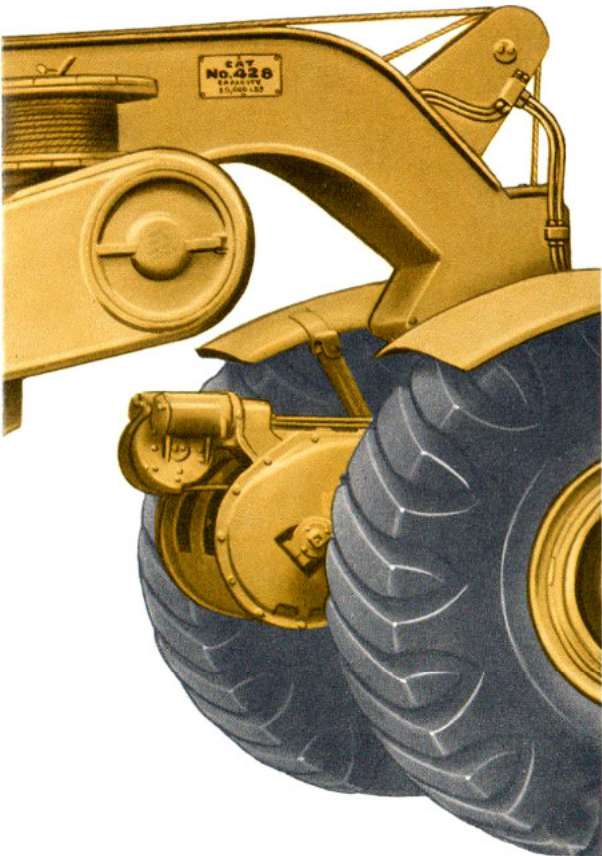


# Y—LOW COST EARTHMOVING

## THE DOLLARS AND SENSE OF SCRAPER LOADING

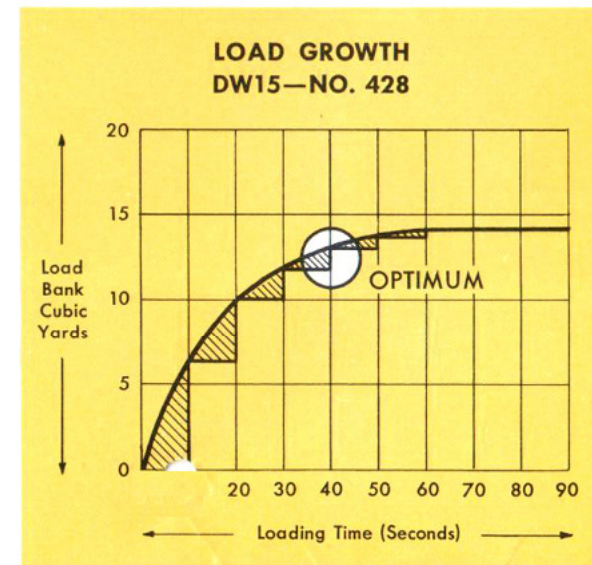
Loadability, not load capacity, is the most important feature in judging a scraper. The best way to study loadability is with stop watch and portable weighing scales right on the job. Actual yardage and loading time of a scraper can be checked and the data plotted to establish a loading curve. Because the first few yards pushed into any scraper are easy to get, the curve will go up rapidly. Then, as loading resistance increases, the additional yards will become progressively harder to load and consume increasing amounts of time. Where the curve begins to flatten, an optimum is reached. Beyond this optimum, further loading just doesn't pay off *cost-wise* on most jobs.

A scraper's "optimum" reflects actual yardage loaded in a practical loading time and varies with every make of scraper, depending upon its loading ability. Such *loadability* is a distinct and basic design feature—the key to a scraper's ability to move dirt fast and economically.

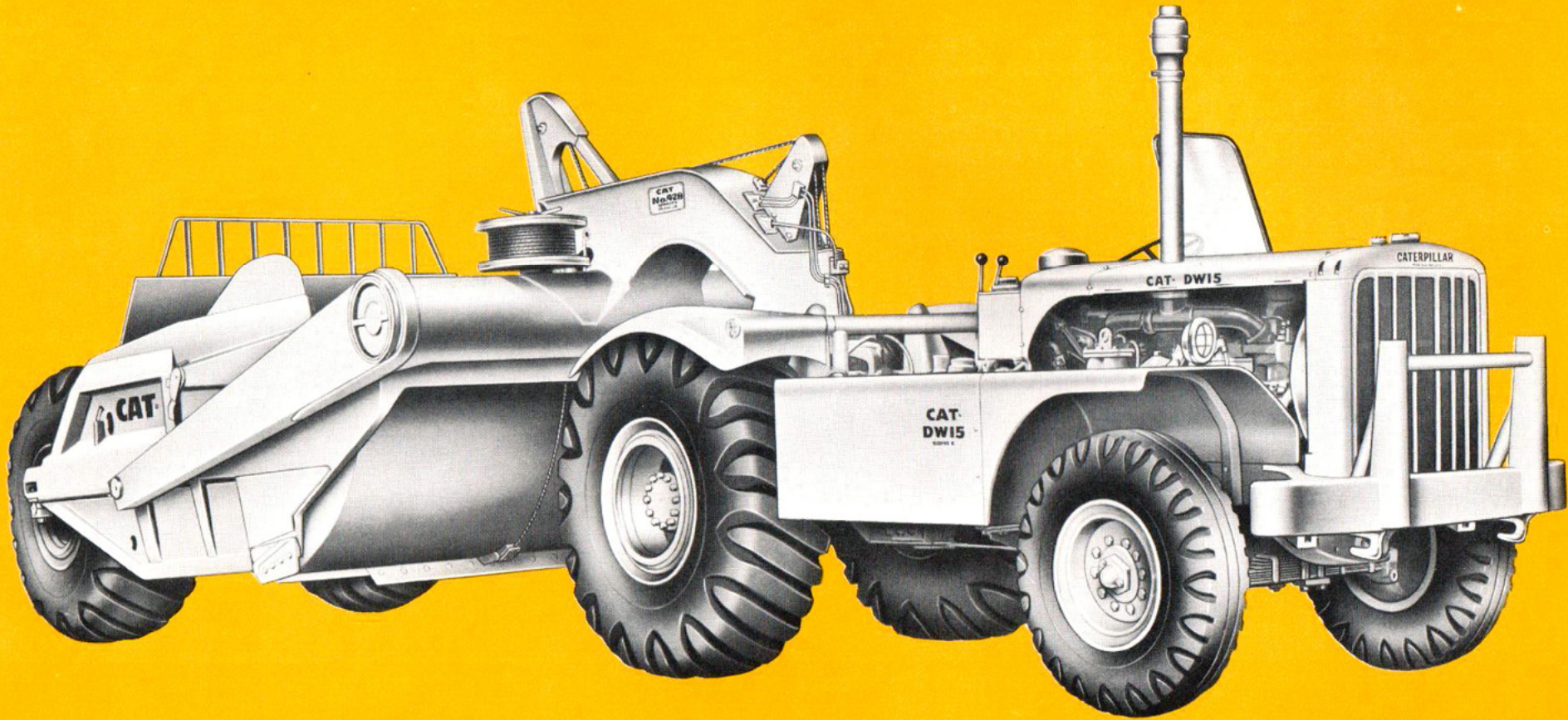


### The Loadability of the No. 428

Because LOWBOWL design reduces loading resistance, the No. 428 shows greater loading efficiency than *any other make* of scrapers in the 13/18 cu. yd. class. Actual job tests confirm this statement. These tests show that the No. 428 Scraper consistently loads 13 bank yards *within its optimum time*. Such *loadability* gives greater production at lower cost-per-yard to owners of DW15-No. 428 units.

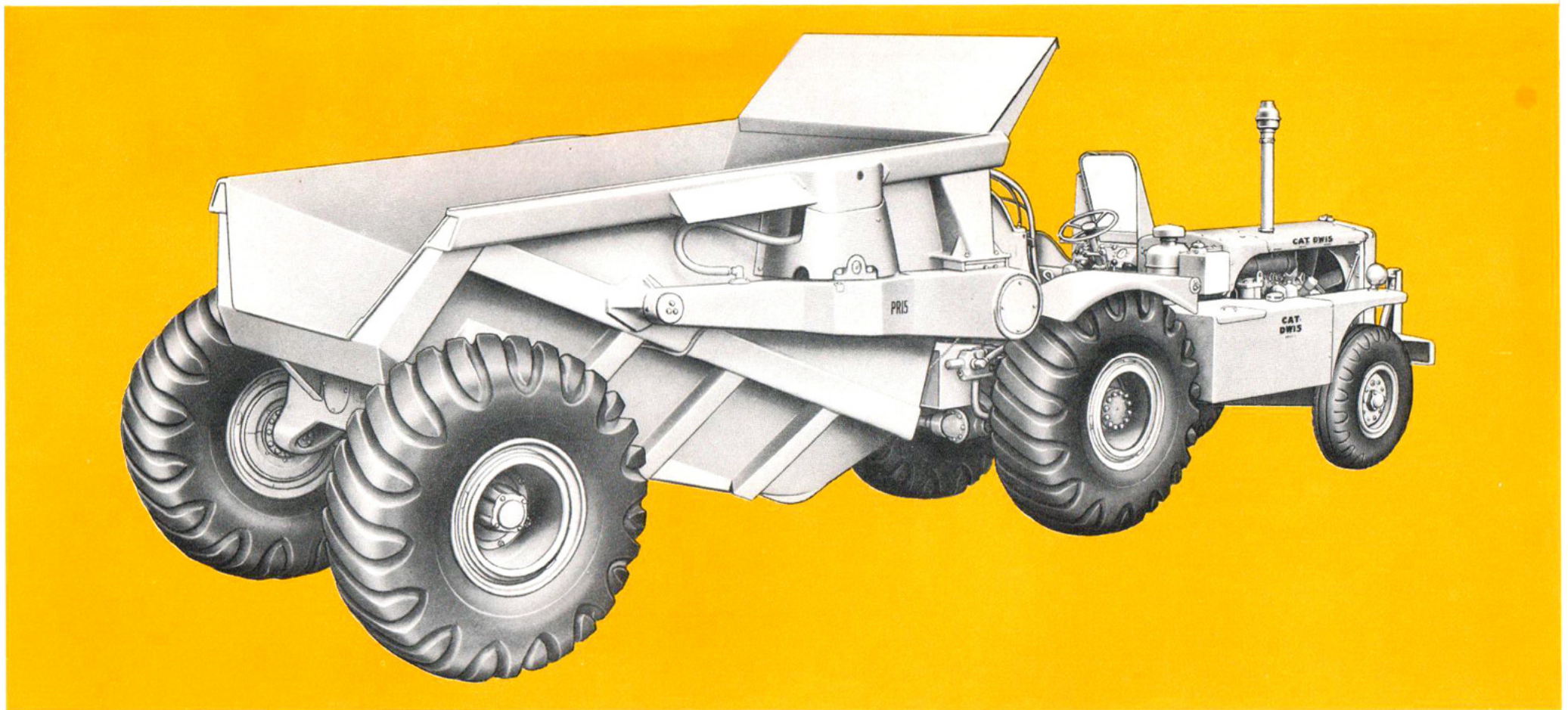


# **CATERPILLAR DW15 (SERIES E) AND NO. 428 —MATCHED FOR TOP PRODUCTION**



**The No. 428 LOWBOWL Scraper Is Matched in Size to the Weight and Horsepower of the DW15 Tractor, Resulting in Maximum Efficiency of Both Units.**

## ANOTHER QUALITY MATCH—THE DW15 AND PR15

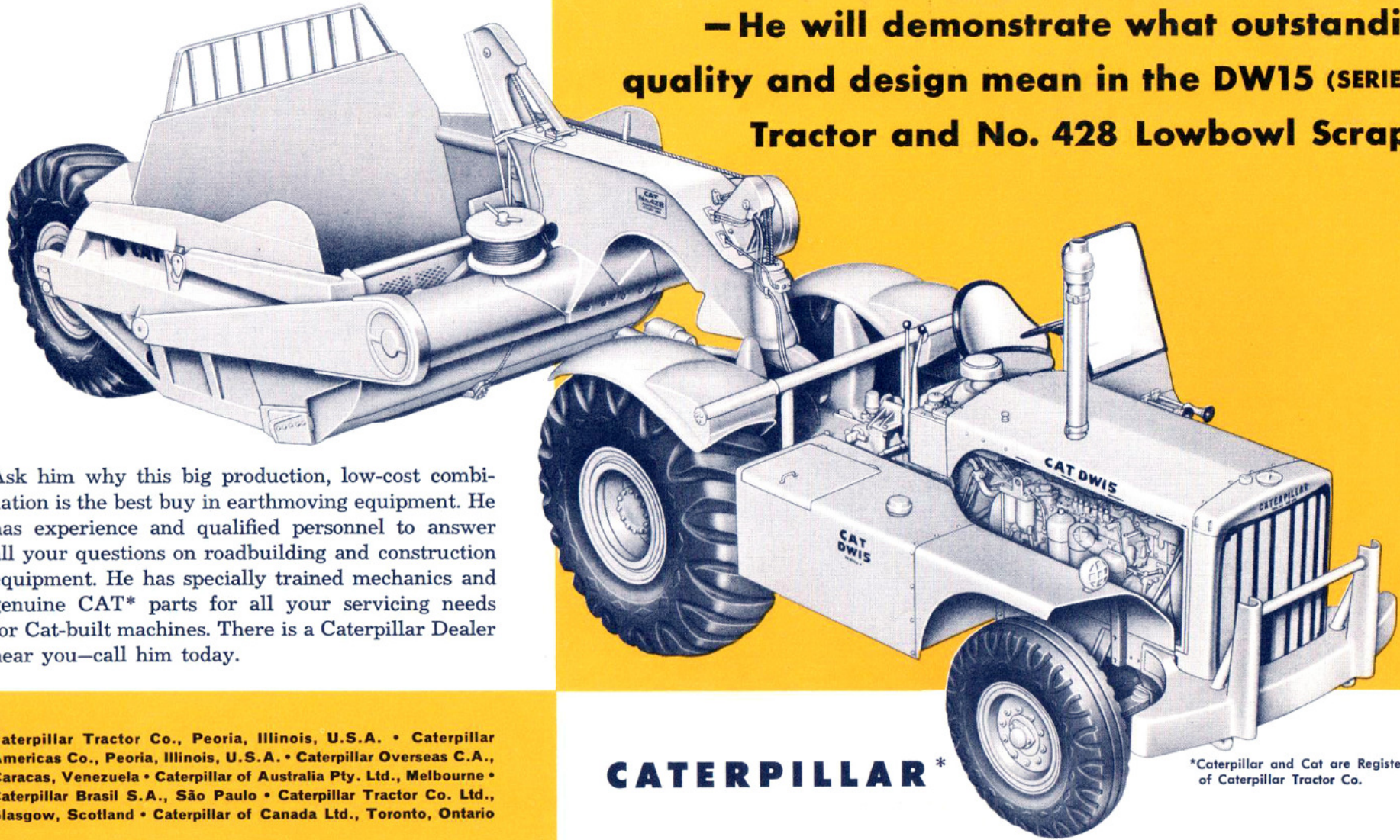


### **ATHEY PR15 REAR DUMP TRAILER CAPACITY—22 TONS OR 15.6 CU. YD. HEAPED**

The Athey PR15 is manufactured to the same high quality specifications as the Cat DW15. Special steels are used to withstand impact, abrasion and corrosion. Triple ply bottom cushions and absorbs shock from rock and other heavy material. Long, wide and low top opening makes a big target for fast loading. Rear dump 60° tilt discharges material quickly and cleanly well behind the trailer wheels. Safe, dependable air controlled brakes on the trailer are synchronized with the tractor for safe high speed stops.

# SEE YOUR CATERPILLAR DEALER

— He will demonstrate what outstanding quality and design mean in the DW15 (SERIES E) Tractor and No. 428 Lowbowl Scraper



Ask him why this big production, low-cost combination is the best buy in earthmoving equipment. He has experience and qualified personnel to answer all your questions on roadbuilding and construction equipment. He has specially trained mechanics and genuine CAT\* parts for all your servicing needs for Cat-built machines. There is a Caterpillar Dealer near you—call him today.

Caterpillar Tractor Co., Peoria, Illinois, U.S.A. • Caterpillar Americas Co., Peoria, Illinois, U.S.A. • Caterpillar Overseas C.A., Caracas, Venezuela • Caterpillar of Australia Pty. Ltd., Melbourne • Caterpillar Brasil S.A., São Paulo • Caterpillar Tractor Co. Ltd., Glasgow, Scotland • Caterpillar of Canada Ltd., Toronto, Ontario

**CATERPILLAR**\*

\*Caterpillar and Cat are Registered Trademarks of Caterpillar Tractor Co.

DIESEL ENGINES • TRACTORS • MOTOR GRADERS • EARTHMOVING EQUIPMENT

**GEVEKE & CO'S TECHNISCH BUREAU N. V.**

DE RUYTERKADE 113  
AMSTERDAM-CENTRUM  
The Netherlands